

# Bluetooth Quick Guide

Connect Bluetooth converter to the PC COM Port and connect DC power adapter as shown below:

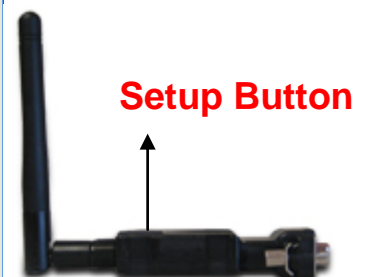
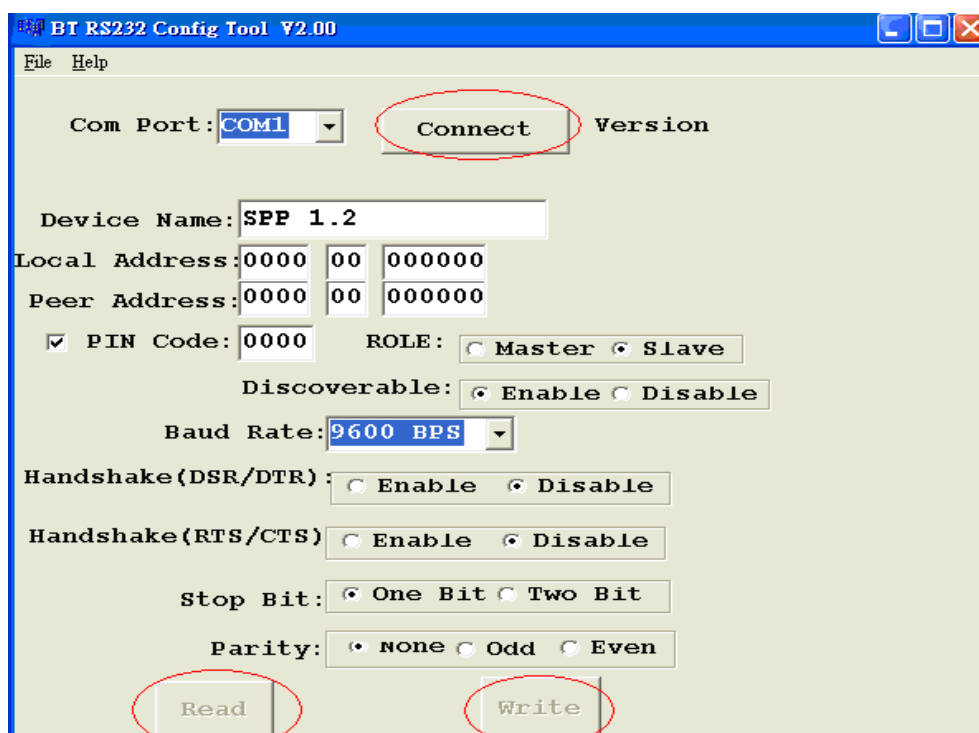


The red (SYS) LED turns on eternally and the green (for pairing) LED blinks per second as shown below:

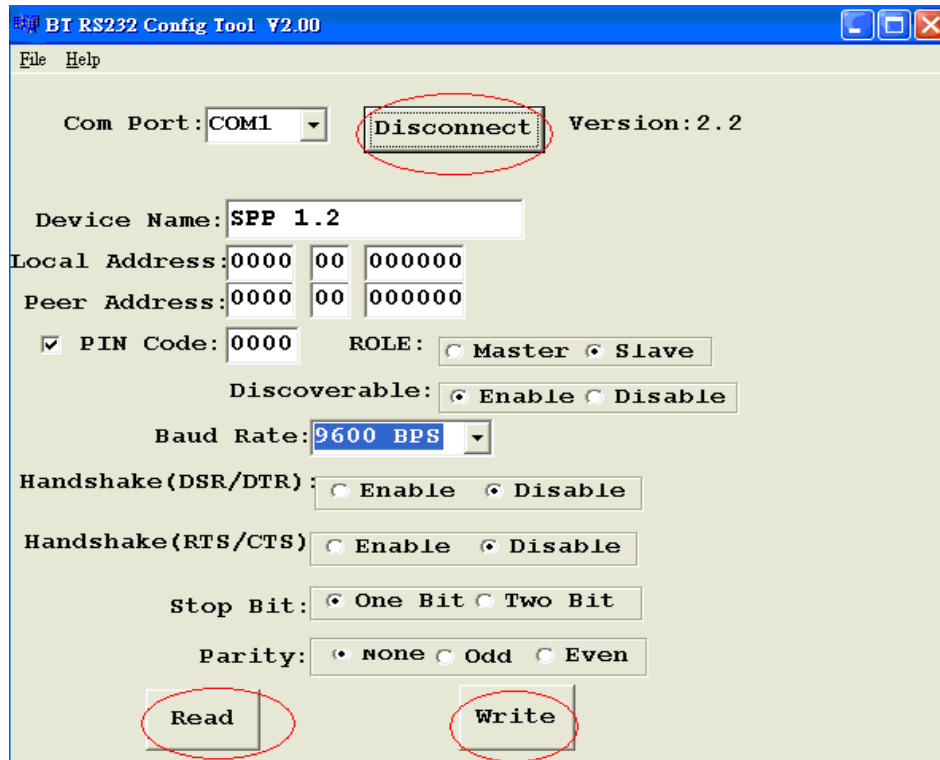


Run the **BT1 setup utility “BT1 vxx.exe”**.

Choose the COM port where the Bluetooth adapter is connected to and click “Connect”, **within 10 seconds upon clicking “Connect”**, use a pin to press the “Setup” button of the Bluetooth adapter.



When enters to Bluetooth setup mode, the green LED & red LED blinks alternatively. The “Connect” icon becomes “Disconnect” and clickable, “Read” & “Write” icons become clickable as shown below.



BT RS232 Config Tool V2.00

File Help

Com Port: COM1 **Disconnect** Version: 2.2

Device Name: SPP 1.2

Local Address: 0000 00 000000

Peer Address: 0000 00 000000

☒ PIN Code: 0000 ROLE: ☐ Master ☒ Slave

Discoverable: ☒ Enable ☐ Disable

Baud Rate: 9600 BPS

Handshake(DSR/DTR): ☐ Enable ☒ Disable

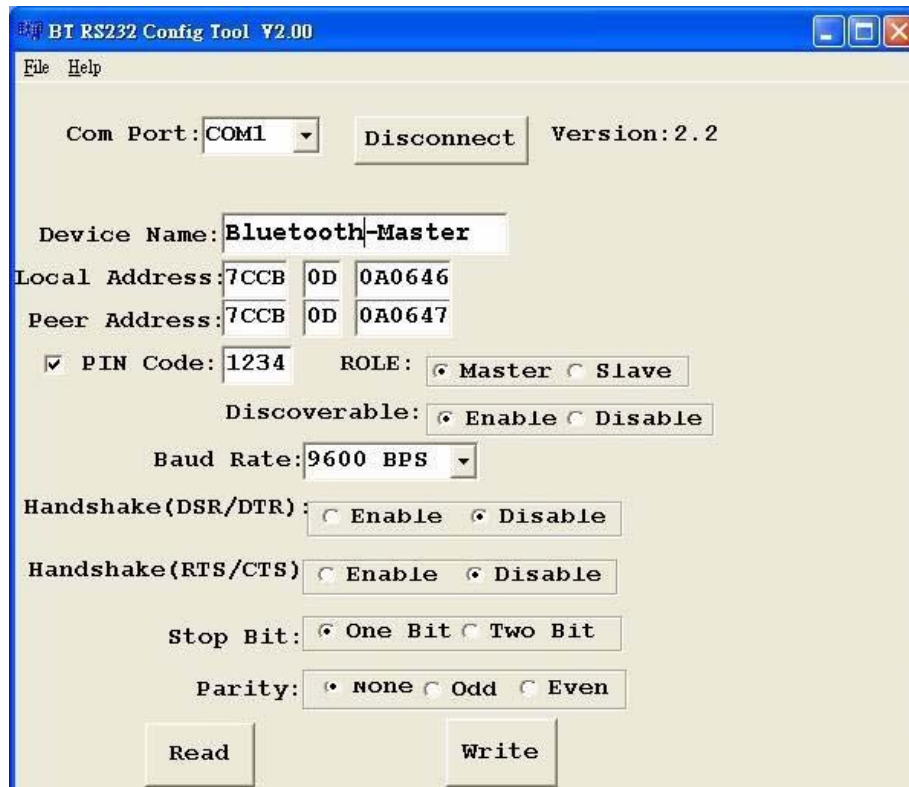
Handshake(RTS/CTS): ☐ Enable ☒ Disable

Stop Bit: ☒ One Bit ☐ Two Bit

Parity: ☒ none ☐ Odd ☐ Even

**Read** **Write**

Click “Read” to read out current parameters settings of the Bluetooth adapter. Edit the parameters as needed then click “Write” to save settings to the Bluetooth adapter when done with modification.



BT RS232 Config Tool V2.00

File Help

Com Port: COM1 **Disconnect** Version: 2.2

Device Name: Bluetooth-Master

Local Address: 7CCB 0D 0A0646

Peer Address: 7CCB 0D 0A0647

☒ PIN Code: 1234 ROLE: ☒ Master ☐ Slave

Discoverable: ☒ Enable ☐ Disable

Baud Rate: 9600 BPS

Handshake(DSR/DTR): ☐ Enable ☒ Disable

Handshake(RTS/CTS): ☐ Enable ☒ Disable

Stop Bit: ☒ One Bit ☐ Two Bit

Parity: ☒ none ☐ Odd ☐ Even

**Read** **Write**

### **DSUB-9 PIN definition**

Pin 1> NC	Pin 6> DTR (data output)
Pin 2> TXD (data output)	Pin 7> CTS (data input)
Pin 3> RXD (data input)	Pin 8> RTS (data output)
Pin 4> DSR (data input)	Pin 9> DC 5v power (in)
Pin 5> GND	

### **Remark**

**RX / TX had been cross over**

**Use parallel (pin to pin) RS232 cable for connecting to PC**

### **Default Value**

**9600, N, 8, 1**

**PIN code : 1234**